

3 to 5 room February Newsletter



FEBRUARY 2019



Ante Pre parents evening

On Thursday 21st February there will be a parents evening for all Ante Pre children. Times will be displayed above each group's pegs for you to choose a slot. This evening will run from 6 to 7:30 pm with 10 minute slots to discuss your child's progress.

Treat/ snack Fund

we greatly appreciate donations towards our treat fund which help fund outings and parties as well as providing daily snack for the children. Money can be donated to our money box within the main playroom daily or weekly. There is a sign in sheet to record your contribution. Thank you

3-5 room learning

Outdoors

In the outdoor area we are going to continue to develop our outdoor space with the help of the children. This month we are planning on developing an outdoor art space, to allow us to create art in the garden using the resources around us.

Construction

In construction we are continuing to learn and develop the 7 stages of block play to create structures and learn the names for all f our different shapes blocks.

Writing and Books

The writing and book area will be focusing on the works of Shirley Hughes, and we will be using the method of the 3 reads as a way of helping develop vocabulary and book handling skills in children.

Small World

Small world is going to focus on Dinosaurs and making up a dinosaur habitat for all our dinosaurs to live in. They will also be developing the side garden into a small world garden

Snack Area.

The snack area will be encouraging children to take part in learning where our foods come from, and will be tasting a variety of fruit and veg for snack. The children will also get to sample Scottish and Chinese foods as we celebrate upcoming festivals.

Baking & Malleable

The baking area is going to be learning about recipes and making some Scottish recipes on the lead up to Burns night, and some Chinese recipes on the lead up to Chinese New Year.

Art Area

The art area will be creating junk models using household recycling. If you have any boxes and bottles you would like to hand in please give them to a member of staff. Please note we cannot accept egg cartons for health and safety reasons.

Maths and Science

The maths area will be learning about numbers through play and have organised games like Snakes and ladders, number snap and Ludo to challenge children in number from 1-100.

Role Play

The role play area is going to be turned into a shop. If you have any empty cereal boxes, jars with labels and packaging we could use in our shop - please hand it to a member of staff. Please note we

cannot accept egg cartons for health and safety reasons.

Safe Crossing

We have had a number of complaints from parents regarding fast and careless driving within the nursery and school grounds.

Can we please ask that you use the turning circle when leaving and keep your speed to a minimum.



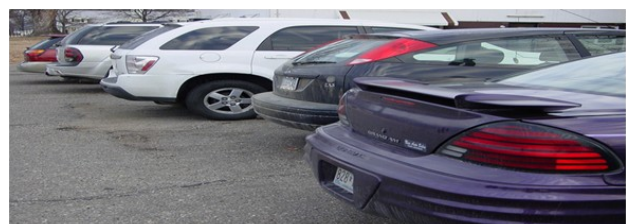
This term we will be working with our children on road safety and finding a safe place to cross.

****Remember the safest crossing is from pavement to pavement at the shortest point****

Not from behind a parked car

Stay safe!

Be Seen!



Allergy information

Can you please be aware that we have some children in our Centre with a variety of allergies; some serious. With this in mind we ask that you are extra cautious about packed lunch provision.

We are and egg and nut free nursery

It may not always be obvious when an item contains nuts so please read allergen information. We also have some children with sesame allergy and again we ask to air caution around the bread used for sandwiches. Please ensure your child's packed lunch is labelled with your child's name and has an ice pack inside

We appreciate your understanding in this matter

Thank you



Cloakroom area

Bags are provided for every child. Please use these for spare clothes for your child.

Wellington boots are provided by the nursery for children during outdoor play.

If you would like to donate ones that your child has outgrown we are happy to accept.

Recycling

Our yellow Nessie bin outside the nursery can be used for recycling clothing.

The nursery receives a small donation for this.

Thank you



Help From Home

We are looking for donations of used or unused Christmas cards for our art area. If you have any you would like to donate please hand them to a member of staff. The art area is also looking for junk for modelling. Please note we cannot accept egg cartons for health and safety reasons. Can we please ask again for any donations of wipes or tissues?

Thank you

Welcome

Welcome to Sheena, who will be taking over the seal group on a Monday, Tuesday and Wednesday, until Samantha returns.



DATES FOR YOUR DIARY

Thursday 21st February Ante preschool children parents' night

Mon 11th and Tue 12th February 2019 February break for term time children

Wednesday 13th February Staff in service day - nursery closed to all children

Thursday 14th February Term time children return

